

Together we care, we learn, we succeed
AROHA AKO ANGITU



IMPORTANT DATES FOR TERM 2

Tues - Sat	04 June- 28 June		Matariki
Tuesday	04 June		Newsletter
Friday	07 June	2.00pm - 3.00pm	Assembly hosted by Room 18
Tuesday	11 June	9.00am - 3.00pm	Netball Zones
Thursday	13 June		Netball Zones - Save day
Monday	17 June		Newsletter
Friday	21 June	2.00pm - 3.00pm	Whole school assembly hosted by Room 14

SAMOAN LANGUAGE WEEK

Vaiaso o le Gagana Sāmoa

'Lalaga le si'osi'omaga mo se lumana'i manuia' – Weave an environment for a better future!

Mangere Bridge celebrated Samoan Language week with the following events

- Monday:** Flag Raising
- Tuesday:** Samoan Word search scavenger hunt
My Kitchen Rules Samoan style - cooking
- Thursday:** Arts and Crafts continuation of My Kitchen Rules
- Friday:** Samoan Group hosted assembly

We would like to thank our families and community for all their support especially our students in the Samoan group for their time and commitment.

Fa'afetai Lava
MBS Pasifika Team



AUTHOR CORNER!

As the weather changes Rm14 are keeping us posted!!

Cyclones

A cyclone is characterized by inward spiraling winds that rotate about a zone of low pressure. The largest low-pressure system is the polar vortex. Have you been in a cyclone? Cyclones can cause a lot of damage like flooding, destructive winds and heavy rain falls.

Cyclones have wind speeds of 195 km per hour, isn't that fast!! Did you know that the Philippines have had the strongest cyclone. It hit the Philippines on the 3rd of November 2013 and it ended on the 11th of November 2013 and it was 195 miles per hour. Cyclones are like giant engines that use warm moist air as fuel, That is why they only form over warm ocean waters. The longest cyclone ever recorded was 31 days and that was hurricane john.

During a cyclone this is what you should do.
First you should turn off all electricity, gas and water, and unplug all appliances. Then you should bring your family together and go into the strongest part of your house. But if you are on a high level go down to the lowest level of your building or house. Next if your house or building begins to break, shelter under a table, bench or a heavy mattress. keep listening to the radio for cyclone updates so you know when it is safe.

Cyclones do massive amounts of damage so if you ever get caught in one make sure you follow the instructions were it says during a cyclone.



By-Jayda, Daniel and Jayden

TE ITI KAHURANGI KAHUI AKO MANUKAU HARBOUR CLEAN-UP EVENT

When: Saturday 15th June 2pm

Where: Corner Coronation Road and Waterfront Road, Mangere Bridge (beside GAS station)

Who: Students, teachers and families from all schools and ECE's in Te Iti Kahurangi Kāhui Ako

Te Iti Kahurangi Kāhui Ako is a community of ten schools: Mangere Bridge Primary School, Waterlea Primary School, Onehunga Primary School, Royal Oak Primary School, Oranga Primary School, Te Papapa Primary School, St Joseph's Primary School, Royal Oak Intermediate, Onehunga High School and Marcellin College, as well as several local early childhood centres.



Recently a Kāhui Ako Environmental Project Working Group was established. The purpose of this working group is to focus on ways in which our schools and extended communities can collaborate on sustainability projects in our local community, starting with a particular focus on building stronger connections with the Manukau Harbour.

This Manukau Harbour Clean-up Event has been designed with that purpose in mind:

As part of the community of Te Iti Kahurangi Kāhui Ako, you are warmly invited to take part in this event.

We encourage people to bring along buckets and tongs to help with the clean-up. (We would rather not use single-use plastic gloves and plastic bags where possible).

We look forward to seeing many of you come together to help look after our precious harbour.

HEALTH NOTICE

Strep Throat is contagious and it is important that it is treated!

Our nurse Kate is here daily in the morning and ready to help with all the sore throats that winter can bring. She can swab your child's throat and then help to organise medication.

Let us know if there is anything we can do to help so together we can work to keep the learning happening.

Measles Notice

Prevent the spread of

Measles

Stop!



Do you think you have measles?

Have you been in contact with someone who has measles? Do you have a fever and any of the following symptoms:

Cough



Runny nose



Sore red eyes



Rash



If so, please stay outside and call us on:



Thank you for helping us to prevent the spread of this serious disease.

Auckland Regional Public Health Service | Te Ora o Tāmaki Makaurau

Auckland Regional Public Health Service
Te Ora o Tāmaki Makaurau



HE HA - High Engagement, High Attendance!

Attendance Data

Term 2 (this far)	-	85.81%
Term 2 Late	-	07.45%

Winter has set in and as the weather changes the mornings can be cold and dark!! Being on time for school is so very important as it sets every child up for that days learning. If you are struggling to get to

school please let us know if we can help in anyway.



Our doors open at 8.30am and children can come into the warm and settle themselves for the days learning.

8.30 in the gate
and you won't be late!



JUST A LITTLE BIT LATE DOESN'T SEEM MUCH BUT....

He/She is only missing just...	That equals...	Which is...	and over 13 years of schooling that's...
10 minutes per day	50 minutes per week	Nearly 1.5 weeks per year	Nearly <u>Half a Year</u>
20 minutes per day	1 hour 40 mins per week	Over 2.5 weeks per year	Nearly <u>1 Year</u>
Half an hour per day	Half a day per week	4 weeks per year	Nearly <u>1 and a Half Years</u>
1 Hour per day	1 Day per week	8 Weeks per year	Over <u>2 and a Half Years</u>

SPORT

On Thursday 29th May MBS had 3 teams, Girls Open team, Boys Open team and Boys Restricted team represent our school at the MOSA Rugby League tournament played at Norana Park.

We were very proud of the way these students carried themselves during the day demonstrating our school values both on and off the field.

CONGRATULATIONS to all our teams, but particularly our Girls Team who came away as the overall **CHAMPION team** in the girls grade.

Thank you to our parents who came to support our teams, we appreciate your time.

Shout out to Coach Fale, Coach Mike, Matua Haki, and Mrs Fiu for coaching our teams and ensuring fair play during the day. A special mention to Mrs White for organising such a successful day behind the scenes, we appreciate you!



BOARD OF TRUSTEES ELECTIONS

Thursday last week was the final meeting of our current Board of Trustees.

We would like to acknowledge the time, energy and commitment of this Board. They have supported our tamariki by having a clear and supportive understanding of their own role, excellent judgement, and much humour combined with a deep appreciation of the need for all of our tamariki to be successful learners.

Both Donna James and Renee Halifihi have spent six years in the service of our school and we are deeply grateful for their energy and commitment over this time. Donna and Renee along with Elena Fa'amoe-Timoteo, Stacey Pinique, and Sharleen McClay will no longer be serving on our Board as they take the time to give this energy back into their own family lives and personal commitments.

**Ka pu te ruha
Ka hao te rangatahi**

*The old net is cast aside
The new net goes fishing*



We are also delighted to warmly welcome our new Board of Trustees and would like to introduce them by sharing the information they submitted with their nominations...



Fale

Ko Te Ahuahu te Maunga
Ko Okaihau te Marae
Ko Ngā Puhi nui tonu te iwi
Ko Niutoua taku pā
Nō Tongatapu ahau.
Ko Finau tāku Pāpā.
Ko Tonga ki te tama o tupu ai pe tāku Māmā
Ko Maama tāku tuahine
Ko Mo'ui tāku tuakana
Ko Ongo tōku teina
Ko Dawn tōku wāhine
Ko Josiah raua ko Jonathan ōku tama
Ko Grace tōku tamahine
Ko Fale Fakataha'anga Mo'ui Lea'aetalafou tōku ingoa
Tēnei au ka mihi atu kia koutou. He hōnore ki au ki te kōrero ki a koutou.
Tēnā koutou katoa

Ko wai au?

My name is Fale. I am a husband to Dawn, father to our 3 tamariki - one of which is Josiah who is in year 3 in the Te Hiaroa Unit – son, brother, uncle, son and brother-in-law. I am of Tongan descent and was raised in the Far North. We have lived in the Bridge for coming on 8 years with my parents and older brother. Since November last year I have been a stay at home Dad. I enjoy spending time with family and friends, reading the Bible and doing CrossFit. As a family we are passionate about helping others and I would love the opportunity to represent parents and families as a whole on the Board of Trustees – seeing Mangere Bridge School continue to grow in all areas. I like to think 'outside the box' and hope to bring a fresh point of view to board matters with the intention of getting things done.
Nō reira, tēnā koutou, tēnā koutou, tēnā tatou katoa. Ngā Aroha kia te koutou



Marisa

Marisa Maclachlan

Some information about me:

I've lived in Mangere Bridge for ten years with my partner, Murray Winiata. We have three kids at MBS in our awesome bilingual unit, Te Hiaroa. Harrison is in year five and our twins, Connor and Caitlin, have just started in year one.

I currently work in an admin role at Te Pane o Mataoho / Mangere Mountain Education Centre and sit on the board of a charitable organisation that runs educational programmes on the Treaty of Waitangi. Prior to this I've worked in adult education as an ESOL teacher, workplace trainer and adult literacy tutor. In this last role, I've seen how important it is not to let any of our kids go through school without gaining a solid foundation in these academic skills.

I've been really pleased to see a lot of positive changes at the school over the time our family has been here and, if chosen to sit on the board, will do my best to support our hard-working MBS staff.



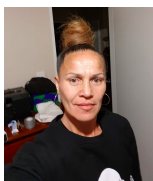
Hamish

Hamish Peart

Kia Ora everyone. I live locally and have two daughters at Mangere Bridge School. I am married to Amelia. I work at a small law firm in Onehunga where we specialise in ACC law. I also teach at the law school at Auckland University of Technology (AUT). I have previously been on the steering committee of the Auckland Disability Law Centre, based in Mangere.

I think Mangere Bridge School is an awesome school, representing our strong and diverse community and giving our kids a great education which they deserve. I am keen to help continue the hard work and achievements of the previous Board. There is a lot of talent and energy amongst the school whanau, teachers and management and it is the Board's job to support that. Most importantly, we need to support our children in a safe, happy and stimulating environment.

I have some skills and knowledge in important areas like Health and Safety and working with disabled and injured people. I have a strong interest in music and would love to try and help provide resources and opportunities for our students in that area. I also believe in learning languages and will strongly support Whaea Steph's vision regarding Te Reo in our classrooms.



Patricia

Patricia Hepi-Brown

Ko Whakarara tōku maunga
Ko Kapuakawau tōku awa
Ko Mataatua tōku waka
Ko Puhikaiariki tōku rangatira
Ko Te Tai Tokerau tōku rohe
Ko Nga Puhi tōku iwi
Ko Ngati Kura tōku hapū
Ko Matauri tōku takiwa
Ko Patricia Hepi-Brown tōku ingoa.

I am a sole parent of seven children, six of whom have schooled through Mangere Bridge Primary School. My youngest twin girls Mikayla and Mikaya are currently in the Māori unit, Te Hiaroa. I moved to Mangere Bridge in 2007 from Ahipara, Northland where I was raised. My interest include Exercise and Sport Science, health and fitness, where I specialise in Personal Training. My hobbies are baking, touch rugby, cricket and Softball. "Poipoia te kakano kia puawai" Nurture the seed and it will blossom.



Simon

Simon Hughes

Ko Snowden tōku maunga.
Ko River Mersey tōku awa.
Ko Irish Sea tōku moana.
Ko Liverpool tōku iwi.
Ko Peter Hughes tōku matua.
Ko Carol Bork tōku whāea.
Ko Simon Hughes tōku ingoa.
Nō reira, tēnā koutou, tēnā koutou, tēnā tātou katoa.

Originally from the UK, I emigrated to NZ nearly fifteen years ago and have lived in Mangere Bridge for the last six years. My daughter attends MBS and is a part of the Kereru whanau. I qualified as a Social Worker with Te Wananga O Aotearoa and I am currently employed by a large social services organisation called Emerge Aotearoa. In my role, I manage a number of community mental health and addictions services for both youth and adults across South Auckland.

In my spare time I'm a Cub Leader with the Mangere Bridge Scout Group and really enjoy working alongside the children to provide them new experiences, growth and challenges. My wife Jasmine is a member of the PTA and I regularly get roped in to help with all the fundraising events.

I have been really impressed over the last few years, watching the school change from a good school to a great one. It can get better. I feel I have knowledge, skills and experience to contribute to the BOT, and help support the school towards its vision.



Rebecca Walker

Tēnā koutou
Ko Hikurangi te maunga.
Ko Waiapu te awa.
Ko Horouta te waka.
Ko Ngāti Porou te iwi.
Ko Paerata te marae.
Ko Grey Walker rāua ko Roy Johnston ōku koro.
Ko Dorothy Waitoa rāua ko Jean Wolsey ōku kuia.
Ko Alex rāua ko Nanette ōku mātua.
Ko Stephen rātou ko Matthew ko Luke ōku tungāne.
Ko Hayden tāku tama.
Ko Anthony Mariner tōku hoa rangatira.
Ko Ripeka tōku ingoa.

I am excited to be a candidate for the staff representative on our school board. I see it as a tremendous opportunity to work closely with some whanau of our school to ensure that the current and future students are learning and growing in the best environment possible.

I am very interested to learn and be a part of how the board governs the school while being able to contribute to the schools direction. I have always been a person out the front - coaching sports or organising fundraisers and am now keen to be a part of what goes on behind the scenes.

I understand the role is to bring a staff perspective to the board whilst at all times maintaining the professionalism and confidentiality of the board ensuring that the learning, well being and best interests of our tamariki are at the heart of all decision making.

Should I be elected I would consider it an honour to give this service to the school community.

ERO REPORT

We have received our confirmed ERO review and you can access the full report on our school website. We acknowledge that this very positive report is due to the time and energy of our teaching and support staff, our Board of Trustees and the support and partnership of our families who send us beautiful tamariki who everyday come ready to learn - it is a great team!!!

*“On the basis of the findings of this review, ERO’s overall evaluation judgement of Mangere Bridge School’s performance in achieving valued outcomes for its students is: **Strong***

For sustained improvement and future learner success, the school can draw on existing strengths in:

- *the leadership and expertise of the principal and distributed leadership team*
- *initiatives to support successful outcomes for Māori and Pacific learners*
- *consultation and collaboration with the school’s community and whānau*
- *the meaningfully integrated inquiry approach to teaching and learning*
- *transparent expectations and reporting processes that support sustainability*
- *high quality internal evaluation and ongoing improvement.*“

OUR STAFF

Our beautiful Whaea Emma will not be coming back when her maternity leave ends this term as she has resigned to take up the position of being a fulltime mother to her two beautiful daughters and her precious baby son. We think this is the most amazing job and understand her desire to give her time and energy to raising three little people ensuring that they have everything they need to have the best start in life. We wish her and Fraser all the best and love that she will still be a mum in our learning community!

Also, this week Mrs Maururi has started her two terms working for the Resource Teachers of Learning and Behaviour where she will be learning new skills to bring back to supporting our children in their learning needs. We will welcome her back on 18 November 2019.

PTA NEWS

Kia ora MBS Whanau,

The PTA would like to thank those who came and supported the uniform sale last week and also to our volunteers that worked at it. Thank you!

SAVE THE DATE: Friday 28th June 2019 @ 1pm – Hell Pizza - Lunch Fundraiser. More details to come in the week prior.

POHUTUKAWA FESTIVAL:

Also, if you have any good quality books, toys, household or sporting items or other bric a brac then pretty please start putting them aside for our Annual Pohutukawa Festival on **Saturday 2nd November 2019**. If you need items out of your house sooner than late October then us as the PTA can offer storage or collection of your goods before then. Contact details are below.

Nga Mihi,
Victoria Piggott

UPCOMING EVENTS

EVENT	Date
Movie Night (Movie TBC)	Friday 9th August from 5:30pm.
Adults Quiz Night	Term 3 - Date TBC (May not happen)
Cross Country Sausage Sizzle	Term 3-Date TBC
POHUTUKAWA FESTIVAL	Saturday 2nd November from 9am-2pm - SAVE THE DATE!
Disco	Term 4 - Date TBC (May not happen)
MB Village Santa Parade	Date TBC - (Usually 1 st Thursday in December)

COMMUNITY NOTICES



Marcellin College

A Year 7 – 13 Catholic Co-educational School
founded by the Marist Brothers

We invite you to our
Open Day 2019

Thursday 20th June & Tuesday 20th August
Tours at 10.00am & 2.30pm

Join us on a guided tour of our school and take the opportunity to meet with staff, ask questions and pick up a 2020 Prospectus

Enrolments are now open for 2020



617 Mt Albert Road, Royal Oak, Auckland 1023
www.marcellin.school.nz
www.facebook.com/MarcellinCollege-1609551419266197
PO Box 24-126, Royal Oak 1345
Telephone: 09 625 6509 office@marcellin.school.nz

PARENTS GRANDPARENTS WHĀNAU

FREE CARSEAT CHECKS

SATURDAY 22ND JUNE
ARST COMMUNITY HALL, CARPARK
53 SKIPTON STREET, MANGERE
10:30AM TO 2:30PM

FRIENDLY
NON - JUDGEMENTAL
CAR SEAT CHECKS & ADVICE

 THE CHILD RESTRAINT EXPERTS
for event updates & info



Parents and Prospective Students are invited to attend

**Mt Roskill Intermediate
EXPO and Open Day**

TUESDAY 30 JULY 2019



Open Morning: 9.00am – 10.30am
(A short presentation by the Principal at 9.20am)
Open Evening: 7.00pm – 8.30pm
(A short presentation by the Principal at 7.20pm)

There will be tours of the school with current students, as well as an EXPO in the hall highlighting all that our school is proud to offer.

Come along and see the exciting learning, sporting and cultural opportunities and the caring environment that our students experience.

Enrolment Packs are now available
www.mris.school.nz

SPCA - FREE Campaign for Cats in June

SPCA is offering FREE spaying, neutering and microchipping for cats in ten Auckland areas from 10th – 28th June 2019, and your school is situated within (or close to) one of our target suburbs.

Each year we receive thousands of unwanted cats and kittens at our Auckland Centre, and we would like to work together with the community to help stop the cat population growing.

We desperately need to reduce the number of kittens coming into our care and we would really appreciate if you could help. By working together we can reduce the number of unwanted kittens being born.

We are writing to see if you can help spread the word within your community by including it in your newsletter, on notice boards or on your website etc.

Anyone who would like to take up the offer must call us to book their cat/s in. The number to call is 09 256 7310.

Bookings for this campaign are now open.